

Miniature Circuit Breakers



Bridging the **gap**

Miniature Circuit Breakers

Never compromise on price or quality

- Extensive range of MCB & RCD products
- Manufactured in accordance with IEC 60898-1
- RoHS compliant
- Finest quality materials synonymous with IMO brand
- Prices that are hard to beat



IMO MCBs Bridge the Gap

Available from stock, IMO's complete range of MCB, RCD and Isolating Switches, deliver the finest quality at competitive prices.

MCBs are available in 1P, 1P+N, 2P, 3P and 3P+N, current range from 2A to 63A. An addition to the range is our B4 single width 1P+N MCB, where space is a premium the B4 could be the solution where neutral switching is required.

The MCB design incorporates a protective indicator and utilises a secured plastic window to facilitate identification labelling, whilst the units also offer a test point facility*, and improved mechanism for extended life with an enhanced Din Rail fitting mechanism.

A full range of accessories is also available from stock, Busbars, Auxiliary contacts, Locking device, etc.

IMO RCDs are suitable for detecting residual leakage current in electrical installations and tripping to a safe off state when needed. These devices are available in both RCCB (Residual Current) and RCBO (Residual and over current) configurations. The RCCB range is available from stock in 1P+N and 3P+N, current range from 10A to 63A and 30mA residual current protection. The RCBO range and alternative rated RCCB are available on request.

To complete the range, IMO Isolating Switches are the same shape as the MCBs and allow overall isolation of the power to the MCBs and RCDs.

* except B4 range



RCCB

Residual Current Circuit Breaker



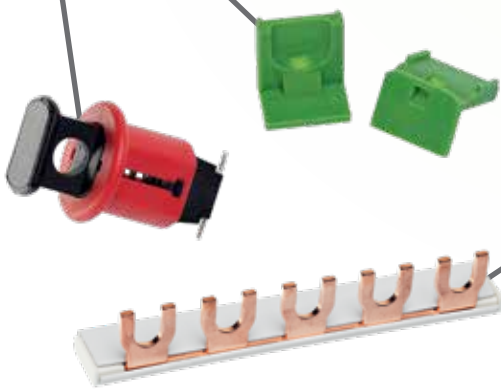
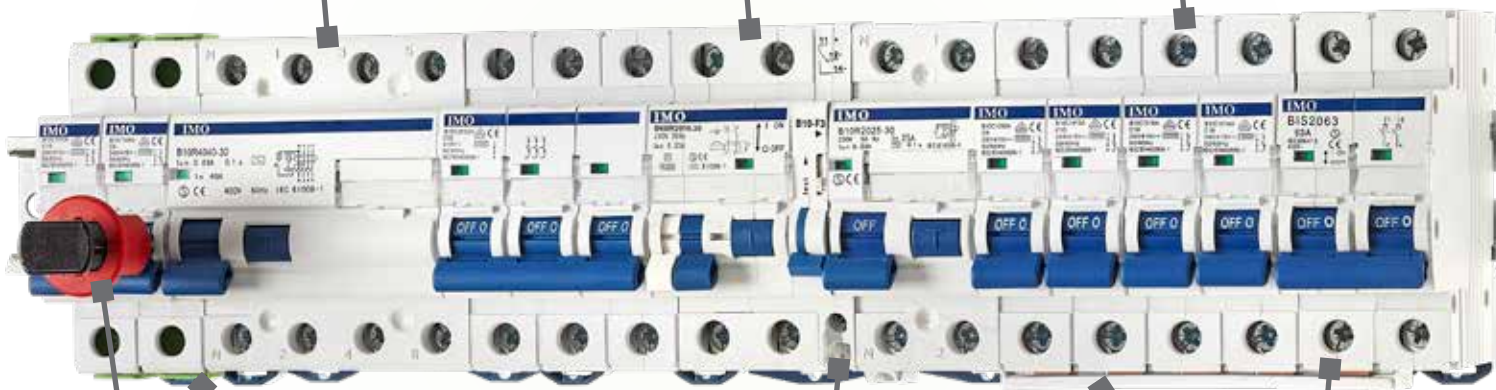
RCBO

Residual Current Breaker with Overcurrent



MCB

Miniature Circuit Breaker



Accessories



Auxiliary



Isolator

Miniature Circuit Breakers B4/B6/B10



The IMO range of Miniature Circuit Breakers has been designed for protection of electrical installations against overload and short circuits, and is manufactured in accordance with IEC 60898-1.

- Bridge The Gap - High quality, highly competitive
- Indicator window displays true contact status (not lever position)
- Independent tripping and trip to central position
- 10kA version as standard for industrial use
- Manufactured in accordance with IEC 60898-1
- CE, VDE, Kema Keur & RCM approved
- RoHS 2 compliant

Tripping characteristics in accordance with B, C and D type curves:-

- Curve B: $3-5 I_n$ Certification: B4/B6: CE
- Curve C: $5-10 I_n$ B10: CE / VDE / Kema Keur / RCM
- Curve D: $10-20 I_n$



Selection Chart

Type	B Operating Characteristics			C Operating Characteristics			D Operating Characteristics				
	1	2	3	1	1N	2	3	3N	1	2	3
Poles											
Rated Current (Amps)	2										
	4										
	6										
	10										
	16										
	20										
	25										
	32										
	40										
50											
63											
Weight (g)	100	100	200	200	300	400	100	200	300		
Packing (pc)	12	12	6	6	4	3	12	6	4		

Available types: Please contact IMO: 4.5kA: 6kA: 10kA:

Please Note: For any related item not shown in this brochure, please contact IMO for availability.

MCB 10kA

Part Number	Description
B10C1002A	MCB 10kA C Curve 1 Pole 2 Amp
B10C1004A	MCB 10kA C Curve 1 Pole 4 Amp
B10C1006A	MCB 10kA C Curve 1 Pole 6 Amp
B10C1010A	MCB 10kA C Curve 1 Pole 10 Amp
B10C1016A	MCB 10kA C Curve 1 Pole 16 Amp
B10C1020A	MCB 10kA C Curve 1 Pole 20 Amp
B10C1025A	MCB 10kA C Curve 1 Pole 25 Amp
B10C1032A	MCB 10kA C Curve 1 Pole 32 Amp
B10C1040A	MCB 10kA C Curve 1 Pole 40 Amp
B10C1050A	MCB 10kA C Curve 1 Pole 50 Amp
B10C1063A	MCB 10kA C Curve 1 Pole 63 Amp

B10C2002A	MCB 10kA C Curve 2 Pole 2 Amp
B10C2004A	MCB 10kA C Curve 2 Pole 4 Amp
B10C2006A	MCB 10kA C Curve 2 Pole 6 Amp
B10C2010A	MCB 10kA C Curve 2 Pole 10 Amp
B10C2016A	MCB 10kA C Curve 2 Pole 16 Amp
B10C2020A	MCB 10kA C Curve 2 Pole 20 Amp
B10C2025A	MCB 10kA C Curve 2 Pole 25 Amp
B10C2032A	MCB 10kA C Curve 2 Pole 32 Amp
B10C2040A	MCB 10kA C Curve 2 Pole 40 Amp
B10C2050A	MCB 10kA C Curve 2 Pole 50 Amp
B10C2063A	MCB 10kA C Curve 2 Pole 63 Amp

B10C3002A	MCB 10kA C Curve 3 Pole 2 Amp
B10C3004A	MCB 10kA C Curve 3 Pole 4 Amp
B10C3006A	MCB 10kA C Curve 3 Pole 6 Amp
B10C3010A	MCB 10kA C Curve 3 Pole 10 Amp
B10C3016A	MCB 10kA C Curve 3 Pole 16 Amp
B10C3020A	MCB 10kA C Curve 3 Pole 20 Amp
B10C3025A	MCB 10kA C Curve 3 Pole 25 Amp
B10C3032A	MCB 10kA C Curve 3 Pole 32 Amp
B10C3040A	MCB 10kA C Curve 3 Pole 40 Amp
B10C3050A	MCB 10kA C Curve 3 Pole 50 Amp
B10C3063A	MCB 10kA C Curve 3 Pole 63 Amp

B10C3N10A	MCB 10kA C Curve 3 Pole + N 10 Amp
B10C3N16A	MCB 10kA C Curve 3 Pole + N 16 Amp
B10C3N20A	MCB 10kA C Curve 3 Pole + N 20 Amp
B10C3N25A	MCB 10kA C Curve 3 Pole + N 25 Amp
B10C3N32A	MCB 10kA C Curve 3 Pole + N 32 Amp
B10C3N40A	MCB 10kA C Curve 3 Pole + N 40 Amp

B10D1002A	MCB 10kA D Curve 1 Pole 2 Amp
B10D1004A	MCB 10kA D Curve 1 Pole 4 Amp
B10D1006A	MCB 10kA D Curve 1 Pole 6 Amp
B10D1010A	MCB 10kA D Curve 1 Pole 10 Amp
B10D1016A	MCB 10kA D Curve 1 Pole 16 Amp
B10D1020A	MCB 10kA D Curve 1 Pole 20 Amp
B10D1025A	MCB 10kA D Curve 1 Pole 25 Amp
B10D1032A	MCB 10kA D Curve 1 Pole 32 Amp
B10D1040A	MCB 10kA D Curve 1 Pole 40 Amp
B10D1050A	MCB 10kA D Curve 1 Pole 50 Amp
B10D1063A	MCB 10kA D Curve 1 Pole 63 Amp

Part Number	Description
B10D2002A	MCB 10kA D Curve 2 Pole 2 Amp
B10D2004A	MCB 10kA D Curve 2 Pole 4 Amp
B10D2006A	MCB 10kA D Curve 2 Pole 6 Amp
B10D2010A	MCB 10kA D Curve 2 Pole 10 Amp
B10D2016A	MCB 10kA D Curve 2 Pole 16 Amp
B10D2020A	MCB 10kA D Curve 2 Pole 20 Amp
B10D2025A	MCB 10kA D Curve 2 Pole 25 Amp
B10D2032A	MCB 10kA D Curve 2 Pole 32 Amp
B10D2040A	MCB 10kA D Curve 2 Pole 40 Amp
B10D2050A	MCB 10kA D Curve 2 Pole 50 Amp
B10D2063A	MCB 10kA D Curve 2 Pole 63 Amp

B10D3002A	MCB 10kA D Curve 3 Pole 2 Amp
B10D3004A	MCB 10kA D Curve 3 Pole 4 Amp
B10D3006A	MCB 10kA D Curve 3 Pole 6 Amp
B10D3010A	MCB 10kA D Curve 3 Pole 10 Amp
B10D3016A	MCB 10kA D Curve 3 Pole 16 Amp
B10D3020A	MCB 10kA D Curve 3 Pole 20 Amp
B10D3025A	MCB 10kA D Curve 3 Pole 25 Amp
B10D3032A	MCB 10kA D Curve 3 Pole 32 Amp
B10D3040A	MCB 10kA D Curve 3 Pole 40 Amp
B10D3050A	MCB 10kA D Curve 3 Pole 50 Amp
B10D3063A	MCB 10kA D Curve 3 Pole 63 Amp

MCB 6kA

Part Number	Description
B6B1002A	MCB 6kA B Curve 1 Pole 2 Amp
B6B1004A	MCB 6kA B Curve 1 Pole 4 Amp
B6B1006A	MCB 6kA B Curve 1 Pole 6 Amp
B6B1010A	MCB 6kA B Curve 1 Pole 10 Amp
B6B1016A	MCB 6kA B Curve 1 Pole 16 Amp
B6B1020A	MCB 6kA B Curve 1 Pole 20 Amp
B6B1025A	MCB 6kA B Curve 1 Pole 25 Amp
B6B1032A	MCB 6kA B Curve 1 Pole 32 Amp
B6B1040A	MCB 6kA B Curve 1 Pole 40 Amp
B6B1050A	MCB 6kA B Curve 1 Pole 50 Amp
B6B1063A	MCB 6kA B Curve 1 Pole 63 Amp

MCB 4.5kA

Part Number	Description
B4C1N02A	MCB 4.5kA C Curve 1 Pole 2 Amp
B4C1N04A	MCB 4.5kA C Curve 1 Pole 4 Amp
B4C1N06A	MCB 4.5kA C Curve 1 Pole 6 Amp
B4C1N10A	MCB 4.5kA C Curve 1 Pole 10 Amp
B4C1N16A	MCB 4.5kA C Curve 1 Pole 16 Amp
B4C1N20A	MCB 4.5kA C Curve 1 Pole 20 Amp
B4C1N25A	MCB 4.5kA C Curve 1 Pole 25 Amp
B4C1N32A	MCB 4.5kA C Curve 1 Pole 32 Amp

Miniature Circuit Breakers BR6



IMO's new range of BR6 Miniature Circuit Breakers offer 6kA short circuit breaking capacity designed for use in domestic, light industrial and commercial applications. As with all IMO MCBs, the new BR6 range deliver the finest quality at competitive prices.

BR6 MCBs are available in B and C Type characteristic tripping curves, and with 1P, 2P or 3P configurations, and are all manufactured in accordance with IEC 60898-1.

MCB BR6 (6kA)

Part Number	Description
BR6B1001A	MCB 6kA B Curve 1 Pole 1 Amp
BR6B1002A	MCB 6kA B Curve 1 Pole 2 Amp
BR6B1004A	MCB 6kA B Curve 1 Pole 4 Amp
BR6B1006A	MCB 6kA B Curve 1 Pole 6 Amp
BR6B1010A	MCB 6kA B Curve 1 Pole 10 Amp
BR6B1016A	MCB 6kA B Curve 1 Pole 16 Amp
BR6B1020A	MCB 6kA B Curve 1 Pole 20 Amp
BR6B1025A	MCB 6kA B Curve 1 Pole 25 Amp
BR6B1032A	MCB 6kA B Curve 1 Pole 32 Amp
BR6B1040A	MCB 6kA B Curve 1 Pole 40 Amp
BR6B1050A	MCB 6kA B Curve 1 Pole 50 Amp
BR6B1063A	MCB 6kA B Curve 1 Pole 63 Amp

Part Number	Description
BR6C2001A	MCB 6kA C Curve 2 Pole 1 Amp
BR6C2002A	MCB 6kA C Curve 2 Pole 2 Amp
BR6C2004A	MCB 6kA C Curve 2 Pole 4 Amp
BR6C2006A	MCB 6kA C Curve 2 Pole 6 Amp
BR6C2010A	MCB 6kA C Curve 2 Pole 10 Amp
BR6C2016A	MCB 6kA C Curve 2 Pole 16 Amp
BR6C2020A	MCB 6kA C Curve 2 Pole 20 Amp
BR6C2025A	MCB 6kA C Curve 2 Pole 25 Amp
BR6C2032A	MCB 6kA C Curve 2 Pole 32 Amp
BR6C2040A	MCB 6kA C Curve 2 Pole 40 Amp
BR6C2050A	MCB 6kA C Curve 2 Pole 50 Amp
BR6C2063A	MCB 6kA C Curve 2 Pole 63 Amp

BR6C1001A	MCB 6kA C Curve 1 Pole 1 Amp
BR6C1002A	MCB 6kA C Curve 1 Pole 2 Amp
BR6C1004A	MCB 6kA C Curve 1 Pole 4 Amp
BR6C1006A	MCB 6kA C Curve 1 Pole 6 Amp
BR6C1010A	MCB 6kA C Curve 1 Pole 10 Amp
BR6C1016A	MCB 6kA C Curve 1 Pole 16 Amp
BR6C1020A	MCB 6kA C Curve 1 Pole 20 Amp
BR6C1025A	MCB 6kA C Curve 1 Pole 25 Amp
BR6C1032A	MCB 6kA C Curve 1 Pole 32 Amp
BR6C1040A	MCB 6kA C Curve 1 Pole 40 Amp
BR6C1050A	MCB 6kA C Curve 1 Pole 50 Amp
BR6C1063A	MCB 6kA C Curve 1 Pole 63 Amp

BR6C3001A	MCB 6kA C Curve 3 Pole 1 Amp
BR6C3002A	MCB 6kA C Curve 3 Pole 2 Amp
BR6C3004A	MCB 6kA C Curve 3 Pole 4 Amp
BR6C3006A	MCB 6kA C Curve 3 Pole 6 Amp
BR6C3010A	MCB 6kA C Curve 3 Pole 10 Amp
BR6C3016A	MCB 6kA C Curve 3 Pole 16 Amp
BR6C3020A	MCB 6kA C Curve 3 Pole 20 Amp
BR6C3025A	MCB 6kA C Curve 3 Pole 25 Amp
BR6C3032A	MCB 6kA C Curve 3 Pole 32 Amp
BR6C3040A	MCB 6kA C Curve 3 Pole 40 Amp
BR6C3050A	MCB 6kA C Curve 3 Pole 50 Amp
BR6C3063A	MCB 6kA C Curve 3 Pole 63 Amp



Residual Current Devices



RCCB Type AC

Part Number	Description
B10R2025-30	RCCB 10kA 30mA 1 Pole + N 25 Amp
B10R2032-30	RCCB 10kA 30mA 1 Pole + N 32 Amp
B10R2040-30	RCCB 10kA 30mA 1 Pole + N 40 Amp
B10R2063-30	RCCB 10kA 30mA 1 Pole + N 63 Amp

B10R4025-30	RCCB 10kA 30mA 3 Pole + N 25 Amp
B10R4032-30	RCCB 10kA 30mA 3 Pole + N 32 Amp
B10R4040-30	RCCB 10kA 30mA 3 Pole + N 40 Amp
B10R4063-30	RCCB 10kA 30mA 3 Pole + N 63 Amp

RCBO Type A

Part Number	Description
B6BR1N06-30-A	RCBO 6kA B Curve 30mA 1 Pole + N 6 Amp
B6BR1N10-30-A	RCBO 6kA B Curve 30mA 1 Pole + N 10 Amp
B6BR1N16-30-A	RCBO 6kA B Curve 30mA 1 Pole + N 16 Amp
B6BR1N20-30-A	RCBO 6kA B Curve 30mA 1 Pole + N 20 Amp
B6BR1N25-30-A	RCBO 6kA B Curve 30mA 1 Pole + N 25 Amp
B6BR1N32-30-A	RCBO 6kA B Curve 30mA 1 Pole + N 30 Amp
B6BR1N40-30-A	RCBO 6kA B Curve 30mA 1 Pole + N 40 Amp

B6CR1N06-30-A	RCBO 6kA C Curve 30mA 1 Pole + N 6 Amp
B6CR1N10-30-A	RCBO 6kA C Curve 30mA 1 Pole + N 10 Amp
B6CR1N16-30-A	RCBO 6kA C Curve 30mA 1 Pole + N 16 Amp
B6CR1N20-30-A	RCBO 6kA C Curve 30mA 1 Pole + N 20 Amp
B6CR1N25-30-A	RCBO 6kA C Curve 30mA 1 Pole + N 25 Amp
B6CR1N32-30-A	RCBO 6kA C Curve 30mA 1 Pole + N 30 Amp
B6CR1N40-30-A	RCBO 6kA C Curve 30mA 1 Pole + N 40 Amp

B6DR1N06-30-A	RCBO 6kA D Curve 30mA 1 Pole + N 6 Amp
B6DR1N10-30-A	RCBO 6kA D Curve 30mA 1 Pole + N 10 Amp
B6DR1N16-30-A	RCBO 6kA D Curve 30mA 1 Pole + N 16 Amp
B6DR1N20-30-A	RCBO 6kA D Curve 30mA 1 Pole + N 20 Amp
B6DR1N25-30-A	RCBO 6kA D Curve 30mA 1 Pole + N 25 Amp
B6DR1N32-30-A	RCBO 6kA D Curve 30mA 1 Pole + N 30 Amp
B6DR1N40-30-A	RCBO 6kA D Curve 30mA 1 Pole + N 40 Amp

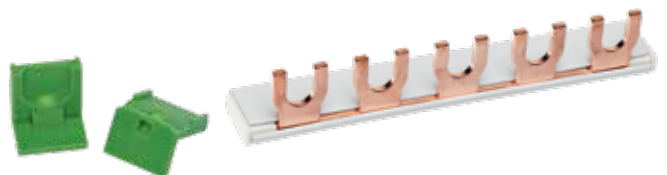
Isolating Switches

Part Number	Description
BIS1063A	1 Pole 63 Amp
BIS2063A	2 Pole 63 Amp
BIS2125A	2 Pole 125 Amp
BIS3063A	3 Pole 63 Amp
BIS4063A	4 Pole 63 Amp
BIS4125A	4 Pole 125 Amp
BIS2100C	2 Pole 100 Amp



Accessories

Part Number	Description
BA1	MCB Terminal Adaptor
B10-TERM	MCB Terminal Blanking Cap
B10-F3	MCB Aux Contact 1PCO 6A
B10-S3	MCB Shunt Trip
B10-LOCK	MCB Lock Device (Padlock Not Inc)
B10BB1F100-1M	MCB Busbar 1P 100 Amp 1m Fork Type
B10BB3F100-1M	MCB Busbar 3P 100 Amp 1m Fork Type
B10BB1P100-1M	MCB Busbar 1P 100 Amp 1m Pin Type
B10BB3P100-1M	MCB Busbar 3P 100 Amp 1m Pin Type
B10BBCAP1	End Cap for 1P Busbar
B10BBCAP3	End Cap for 3P Busbar



IMO Worldwide Offices

IMO Precision Controls Limited

The Interchange
Frobisher Way
Hatfield, Herts AL10 9TG
United Kingdom

Tel: 01707 414 444
Fax: 01707 414 445
Email: imo@imopc.com
Web: www.imopc.com

IMO Jeambrun Automation SAS

5, Rue Alfred De Musset
94100
Saint-Maur-Des-Fosses
France

Tel: 0800 912 712 (n° gratuit)
Fax: 0145 134 737
Email: imo-fr@imopc.com
Web: www.imojeambrun.fr

IMO Automazione

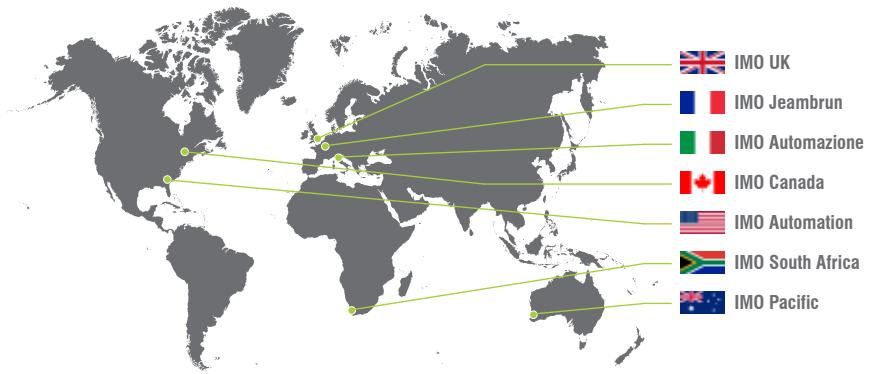
Via Belfiore 10,
50144 Firenze (FI)
Italia

Tel: 800 930 872 (toll free)
Fax: 8000 452 6445
Email: imo-it@imopc.com
Web: www.imopc.it

IMO Canada

Unit 32 - B - North
18 Strathearn Avenue, Brampton
Ontario L6T 4Y2
Canada

Tel: 905 799 9237
Fax: 905 799 0450
Email: imo-ca@imopc.com
Web: www.imopc.com



IMO Automation LLC

Steeplechase Industrial Park
Suite E, 5845 Steeplechase Blvd
Cumming, GA 30040
USA

Tel: 404 476 8810
Fax: 678 679 7112
Email: imo-usa@imopc.com
Web: www.imoautomation.com

IMO South Africa (Pty) Ltd

G16 Centurion Business Park
Montague Gardens
Cape Town 7441
South Africa

Tel: 021 551 1787
Fax: 021 555 0676
Email: info@imopc.co.za
Web: www.imopc.co.za

IMO Pacific Pty Ltd

Unit 9, Dillington Pass
Landsdale
Perth WA 6065
Australia

Tel: 1300 34 21 31
Fax: 08 9303 9908
Email: sales@imopacific.com.au
Web: www.imopacific.com.au




Connect with and follow IMO Precision Controls Ltd.
for the latest news, views and reviews